

HEATING

# INDIRECT AIR HEATERS FOR AGRICULTURAL APPLICATIONS

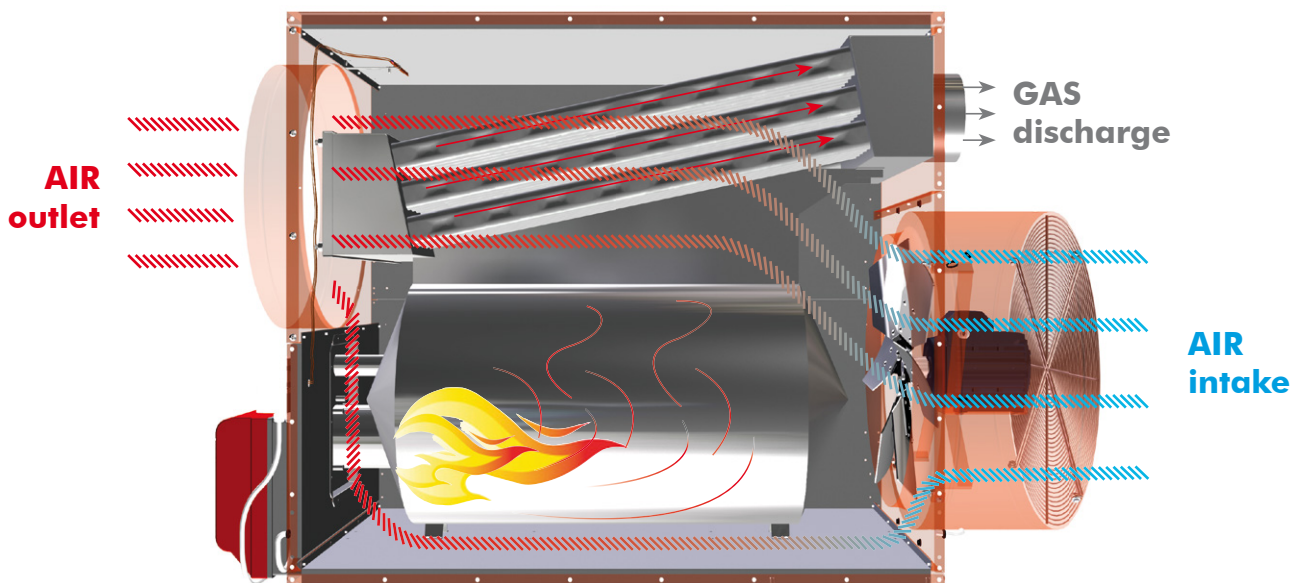


since 1967

# combiTERM

## INDIRECT AIR HEATER

The series **combiTERM** represents a new generation of indirect air heaters, whose main characteristic is application versatility. The unique stainless steel combustion chamber guarantees an efficient heat exchange between the exhaust smoke and the clean air released in the surrounding environment. The wallhousing can be accessorized with practical removable and replaceable elements, which allow the heater to be transformed from the suspended version to the wheeled or standing one; different air outlets are also available. Easy handling, transport and installation are assured by the high quality, the state-of-the-art performances and the innovative design of the wallhousing and of the accessories. This heater can run on diesel, LPG or natural gas.



## Technical features

# combiTERM



Standard base module



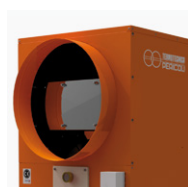
Horizontal base module



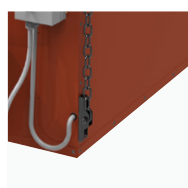
**DHD**  
Directable diffuser



**TEE**  
Frontal "T" double outlet



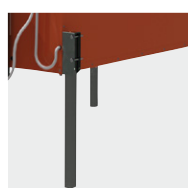
**PHE**  
Round hot air outlet  
both for direct  
air diffusion and  
canalization



**SHK**  
Practical hooks  
for suspended  
installation



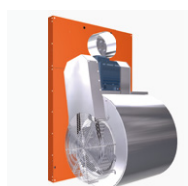
**WSK**  
Wheels for mobile  
installation



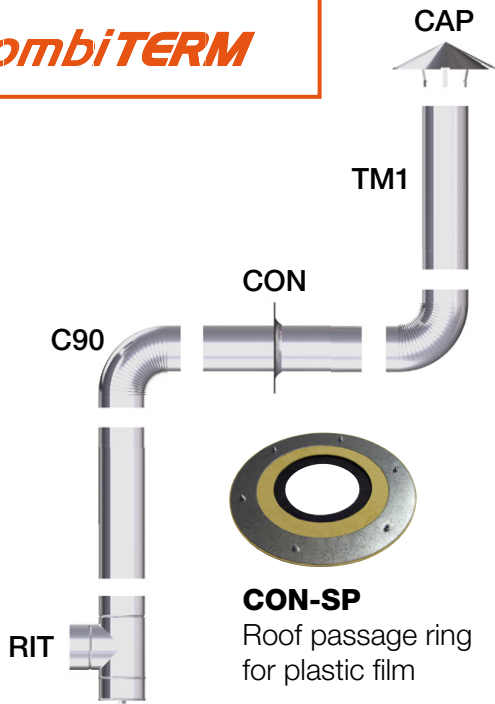
**KST**  
Standing kit for  
installation on the floor



**E**  
Axial fan



**C**  
Centrifugal fan,  
recommended when  
air canalization is  
needed



**TM1**  
Stainless steel chimney pipe, 1 mt length

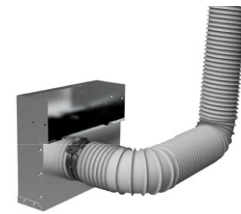
**CAP**  
Stainless steel cap for chimney pipe

**C90**  
Stainless steel elbow 90°

**CON**  
Galvanised steel roof plate for fixing the chimney pipe to the wall or the roof of the building

**CON-SP**  
Roof passage ring for plastic film

**RIT**  
Stainless steel "T" union with inspection cover



**OAI**  
Outside air inlet  
Available upon request for different models of oil and gas burners



**PLG**  
1 m extension for PHE



**RPE**  
Double stage pressure regulator for LPG gas.  
Pin = 0,53 – 1,95 bar  
Pout = 30 – 35 mbar  
Flow rate up to 20 kg/h

**HP11W**  
Electronic thermostat with digital display for accurate temperature control



**AMDR-1**  
Mechanical thermostat, an economical solution for temperature control



## Technical features

Model		35	60	100	140	190	240	35	60	100	140	190	
<b>Propeller</b>		<b>Centrifugal (C-X)*</b>						<b>Axial (E-X)*</b>					
Thermic power	Kcal/h kW	31.000 36	51.600 60	86.000 100	129.000 150	163.000 190	206.000 240	31.000 36	51.600 60	86.000 100	129.000 150	163.000 190	
Thermic yield	%	90,2	90,3	91	90,5	90,1	91	90,2	90,3	91	90,5	90,1	
Oil consumption	Kg/h	3	5,1	8,5	12,6	16	20,2	3	5,1	8,5	12,6	16	
Methane G20 consumption	Nm³/h	3,8	6,4	10,6	15,8	20	25,4	3,8	6,4	10,6	15,8	20	
G30 consumption	Kg/h	2,8	4,7	7,9	11,8	15	18,9	2,8	4,7	7,9	11,8	15	
G31 consumption	Kg/h	2,8	4,7	7,8	11,7	14,8	18,7	2,8	4,7	7,8	11,7	14,8	
Nom. fan motor power	kW	0,245	0,74	1,5	2,2	3	4	0,37	0,55	0,75	1,1	1,5	
Propeller	mm	10/10	12/9	12/12	15/15	18/13	18/18	Ø 400	Ø 450	Ø 500	Ø 600	Ø 720	
Available air displacement (with accessory PHE)	m³/h	2.600	5.100	7.000	11.300	14.200	17.200	2.600	5.000	7.500	9.500	12.800	
Available static pressure	Pa	130	200	210	210	210	230	50	50	60	60	70	
Thermal gradient	°C	37	32	34	36	38	39	38	41	43	40	42	
Electrical nominal power (with GAS burner)	kW	0,6 (BS1)	1,2 (BS2)	2,3 (BS3)	3,4 (BS3)	4,5 (BS4)	5,9 (RS5)	0,7 (BS1)	1 (BS2)	1,4 (BS3)	1,8 (BS3)	2,5 (BS4)	
Electrical nominal power (with OIL burner)	kW	0,6 (RG1)	1,2 (RG2)	2,3 (RG2)	3,5 (RG3)	4,5 (RG4)	5,8 (RG5)	0,7 (RG1)	1 (RG2)	1,5 (RG2)	2 (RG3)	2,5 (RG4)	
Voltage	V	230 1~N ±	230/400 3~N ±	230/400 3~N ±	230/400 3~N ±	230/400 3~N ±	230/400 3~N ±	230 1~N ±	230/400 3~N ±	230/400 3~N ±	230/400 3~N ±	230/400 3~N ±	
Frequency	Hz	50 60	50 60	50 60	50 60	50 60	50 60	50 60	50 60	50 60	50 60	50 60	
Protection grade	IP	40	40	40	40	40	40	40	40	40	40	40	
Chimney diameter	mm	150	150	180	200	250	250	150	150	180	200	250	
Noise level at 7m	db (A)	52	63	65	65	70	72	63	67	68	70	78	
Range of application	°C	0 +40	0 +40	0 +40	0 +40	0 +40	0 +40	0 +40	0 +40	0 +40	0 +40	0 +40	

\*Available only for extra EU markets

**Note:**  
The country of destination is to be specified for each order.



## Technical features, dimensions and loading possibilities

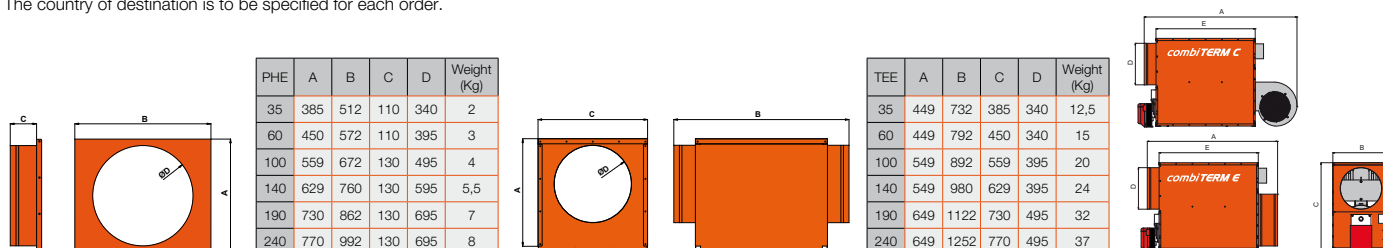
# COMBI TERM

Model	GAS				OIL									
	100 E	100 C	140 C	240 C	60 E	60 C	100 E	100 C	140 E	140 C	190 E	190 C	240 C	
Propeller	Axial	Centrifugal	Centrifugal	Centrifugal	Axial	Centrifugal	Axial	Centrifugal	Axial	Centrifugal	Axial	Centrifugal	Centrifugal	
Thermic power (Hi)	kW	100	100	150	240	60	60	95	95	150	150	190	190	240
Thermic yield (Hi)	%	91	91	90,5	91	90,3	90,3	92	92	90	90	91	91	91
Oil consumption	kg/h	-	-	-	-	5,1	5,1	8	5,9/8	10,1/12/6	10,1/12/6	16,1	16,1	13/20,2
Methane G20 consumption	Nm³/h	10,6	10,6	15,9	25,4	-	-	-	-	-	-	-	-	-
G30 consumption	kg/h	7,9	7,9	11,8	18,9	-	-	-	-	-	-	-	-	-
G31 consumption	kg/h	7,8	7,8	11,6	18,6	-	-	-	-	-	-	-	-	-
Nominal fan motor power	kW	0,75	1,5	2,2	4	0,55	0,245	0,75	1,5	1,5	2,2	2,2	3	4
Propeller	-	Ø 500mm	12/12	15/15	18/18	Ø 450mm	12/9	Ø 500mm	12/12	Ø 610mm	15/15	Ø 650mm	18/13	18/18
Available air displacement (with accessory PHE)	m³/h	7.800	7.900	11.300	17.200	5.000	5.100	7.800	7.900	9.800	11.300	13.400	14.100	17.200
Available static pressure	Pa	60	210	210	230	50	200	60	210	60	210	70	210	230
Thermal gradient	°C	43	34	36	39	41	32	43	34	40	36	42	38	39
Electrical nominal power (with burner)	kW	1,4	2,3	3,4	6	1	1,2	1,4	2,3	2,7	3,5	3,8	4,9	6,2
Homologated burner	-	BS3/BS3D	BS3/BS3D	BS3/BS3D	BS4/BS4D	BGK3	BGK3	BG6.1D	BG6.1D	BG7.1D	BG7.1D	RL25Blu	RL25Blu	RL25Blu
Protection grade (with burner)	IP	40	40	40	40	40	40	40	40	40	40	54	54	54
Chimney diameter	mm	180	180	200	250	150	150	180	180	200	200	250	250	250
Noise level at 7m	dB (A)	68	65	65	72	67	63	68	65	70	65	76	70	72
Range of application	°C	0 +40	0 +40	0 +40	0 +40	0 +40	0 +40	0 +40	0 +40	0 +40	0 +40	0 +40	0 +40	0 +40

Voltage: Δ 220-240 Y 380-420 - 50Hz

### Note:

The country of destination is to be specified for each order.



Model	35	60	100	140	190	240	35	60	100	140	190	
Propeller	Centrifugal (C-X) (C)						Axial (E-X) (E)					
Length (A)	mm	1.310	1.575	1.810	2.005	2.200	2.330	1.100	1.300	1.610	1.735	1.810
Width (B)	mm	512	572	672	760	862	992	512	572	672	760	862
Height (C)	mm	764	916	1'046	1'136	1'290	1'362	764	916	1'046	1'136	1'290
Diameter PHE (D)	mm	340	395	495	595	695	695	340	395	495	595	695
Base (E)	mm	767	966	1184	1297	1377	1507	767	966	1184	1297	1377
Weight	Kg	100	140	185	255	325	370	95	125	165	225	280

Model	35	60	100	140	190	240	35	60	100	140	190	
Propeller	Centrifugal (C-X) (C)						Axial (E-X) (E)					
Container 20ft		28	24	16	12	6	5	36	28	20	15	6
Container 40ft		64	48	34	27	13	12	76	58	42	30	13
Truck		48	33	22	19	15	13	52	37	28	22	15

# F-OTB

## DIRECT-DRIVEN JET-FAN

The jet-fan was developed to transfer the heat, produced by an external water boiler to the air passing through the special copper/aluminium exchangers. The fan can efficiently distribute the hot air in the surrounding space both directly and through canalization. It is characterized by a sturdy steel wallhousing with two water/air heat exchangers and axial electric fan for air diffusion. **F-OTB** was specially developed to solve heating, ventilation, air circulation and humidity problems in agricultural and industrial environments where it is important to maintain steady conditions.



**FIZ** impurity filter pair  
(optional)



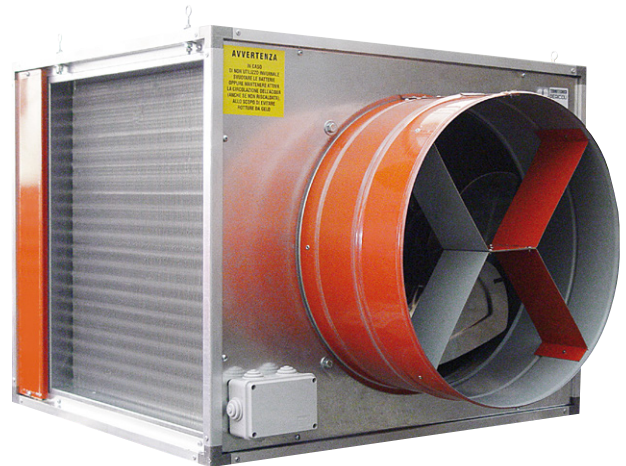
Direct driven high  
efficiency fan



Battery in copper/  
aluminum for a higher  
efficiency and longer  
lifetime



4 suspension  
eyes included



## Technical features

# F-OTB

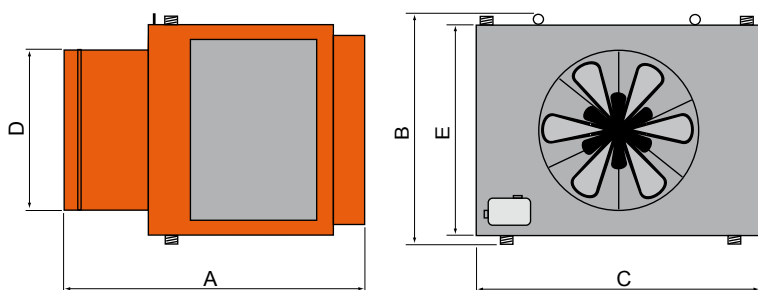
Model		550-2	550-3	600-3	700-3
Thermic power	Kcal/kW	45.000 / 52	60.000 / 69	80.000 / 93	100.000 / 116
Pressure drop through radiators	m/H $\rho$ O	0,25	0,86	1,16	1,25
Water flow rate	(l/h)	4.500	6.000	8.000	9.930
Radiators per fan	n.	2	2	2	2
Coils per radiator	n.	2	3	3	3
Pipes per radiator	n.	11	11	12	14
Frontal radiator surface area	dm <sup>2</sup>	30,25	30,25	36	49
Water pipe diameter	inch"	1"/1/4	1"/1/4	1"/1/4	1"/1/2
Fan air displacement	m <sup>3</sup> /h	6.000	6.000	8.000	10.000
Fan revolution	rpm	1.380	1.380	1.380	1.000
Fan motor power	kW	0,5	0,5	0,8	0,8
Voltage - Frequency*	v	230/400 - 50	230/400 - 50	230/400 - 50	230/400 - 50
Noise level at 5 m	db (A)	53	53	55	51

\*60Hz version available upon request

**Note:**

All data in the above chart refer to the following conditions: water inlet temperature +75°C, water outlet temperature +65°C, air inlet temperature +15°C

## Dimensions and loading possibilities



Model	550-2	550-3	600-3	700-3
A [mm]	970	970	1.020	1.120
B [mm]	725	725	775	870
C [mm]	655	655	705	800
D [mm]	470	470	520	640
E [mm]	655	655	705	800
Weight [kg]	66	68	72	83

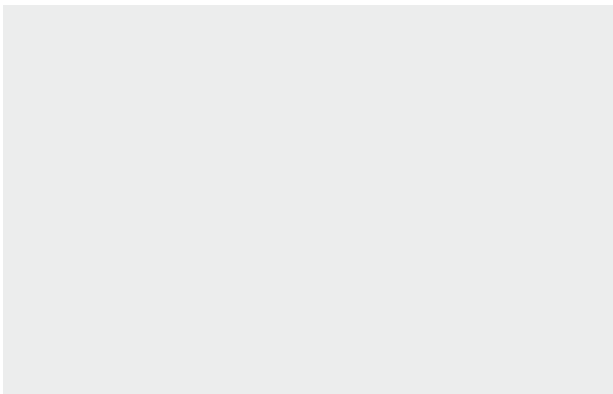
### Loading possibilities on pallet

Model	550 / 600		700	
LxWxH [mm]	1100x1100x2000	900x850x1200	1200x1150x2100	1100x1050x1250
N° of pieces	2	1	2	1
Gross weight - kg]	155	85	181	98

### Loading possibilities

Model	550 / 600	700
Container 20ft	20	16
Container 40ft	40	36
Truck	30	24

All data in this catalogue are indicative and are subject to change without prior notice.



**TERMOTECNICA PERICOLI S.r.l.**  
Regione Rapalline, 44 - 17031 Albenga, Italia  
tel. 0182 589006 fax 0182 589005 pit@pericoli.com

**PERICOLI ASIA PACIFIC Sdn. Bhd.**  
pap@pericoli.com

**PERICOLI CENTRO AMERICA**  
pca@pericoli.com

**PERICOLI MIDDLE EAST**  
pme@pericoli.com

**PERICOLI INDIA Pvt. Ltd.**  
pin@pericoli.com

[pericoli.com](http://pericoli.com)



**PERICOOL** sono marchi registrati di Termotecnica Pericoli S.r.l.