

# Product Specification



## 1, Product Features

Withstand steam and water leaks

IP67 waterproof index, standing for high pressure water jet

Against cleaning chemicals and ammonia gas resistance

High power factor (PF>95)

Long lifespan time >50,000hrs

## 2, Application

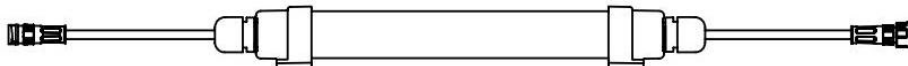
Mainly used in Chicken farm, pig house, turkey farm

### 3, Lighting Parameters

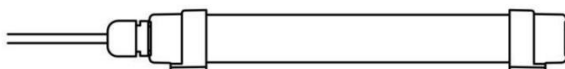
Product Code	HT-T12AC25W12FD	HT-T12AC30W15FD	HT-T12AC35W18FD
Power	25W	30W	35W
Lumen efficiency	2750lm	3300lm	3850lm
Dimension	L=1200mm, Φ=32mm	L=1500mm, Φ=32mm	L=1800mm, Φ=32mm
Color temperature	2700K/3000K/4000K/5000K/6000K/6500K		
CRI(RA)	Ra>80		
Beam angle	180/270Degree		
Electrical protection class	Class II		
IP grade	IP67		
Material	Full PC cover, Full aluminum Body		
Power factor	PF>0.95		
Operating temp.	-20°C - 55°C		
Color housing	Frosted, Clear		
Resistant to	Ammonia gas, cleaning chemicals, dust, water torch flushing		
Operating hours	50,000hours		
Input voltage	220V/120Vac		
LED chip	San'an for standard		
Driver	Built-inside driver, isolated, flicker free		
Certificate	CE, RoHS, SAA, IP67, TUB--CB,		
Flammability rating	94 V-2		
Light Decay	20.41% for 50000hrs		
Cable use	16AWG for standard (2*1.0mm <sup>2</sup> )		
Warranty	5year		

### 4, Tube Light with cable

-- B type : Double end with cable



-- A type: Single end with cable

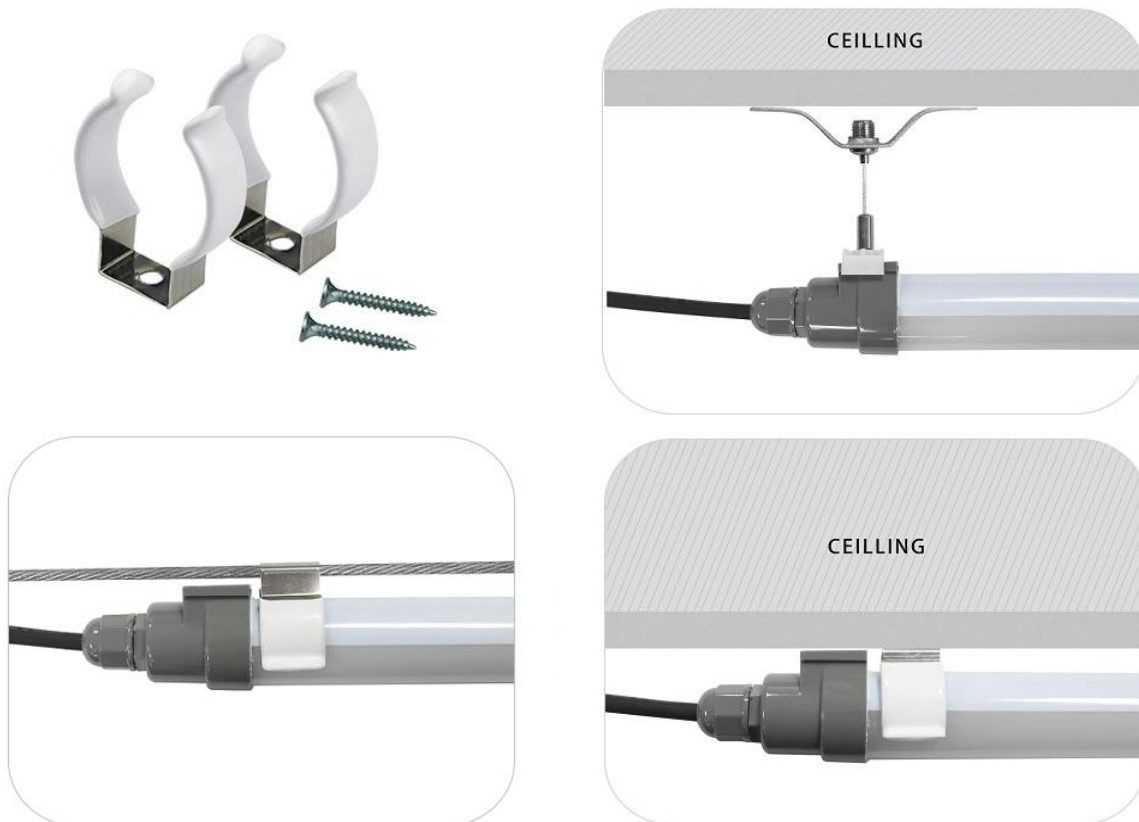


-- Remark: Cable length is flexible to be customized by requirement

### 5, Packing information

Product Code	HT-T12AC25W12FD	HT-T12AC30W15FD	HT-T12AC35W18FD
Power	25W	30W	35W
Qty/carton	25pcs	25pcs	25pcs
Carton size	131*31*30cm	161*31*30cm	191*29*29cm
Gross weight	25.5KGS	28.5KGS	30.5KGS

### 6, Installation



- This unit **MUST** be installed and wired by a qualified electrical contractor.
- Please cut the power off when install and remove the products to avoid risk of electric shock
- Ensure that the fixed plate should be firmly afforded 2kg.
- Each LED tube should be not less than 2pcs screw or bolt.
- Fixture control gear/AC cable **MUST BE MOUNTED ABOVE** any insulation covering and waterproof box.
- Do not look directly at LED light source for a long time.

### 7, Project case

